

issues

**SERVICE INSTRUCTION no. 2018/3**  
**Ball Valve Lever Nut Securing for Kubicek Fuel Cylinders**

**Cause:** Ball Valve Lever Securing Nut loss prevention

**With reference to:** Kubicek Fuel Cylinders

**Action:** Securing Washer installation

*Required Material*

Part Number	Part	Quantity
57713.00	Ball Valve Lever Securing Washer, 0.3mm	1

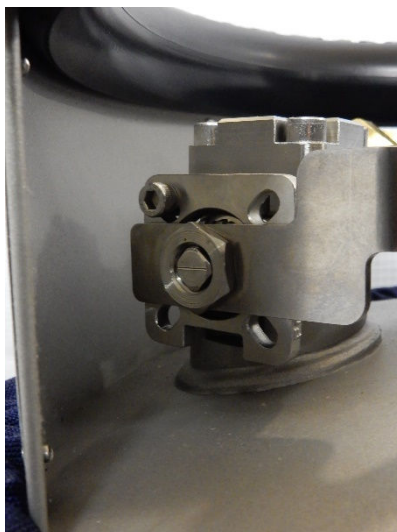
*Equipment*

Before the installation make sure to have ready these items:

- wide slotted screwdriver
- open-end wrench size 19
- tongue-and-groove pliers

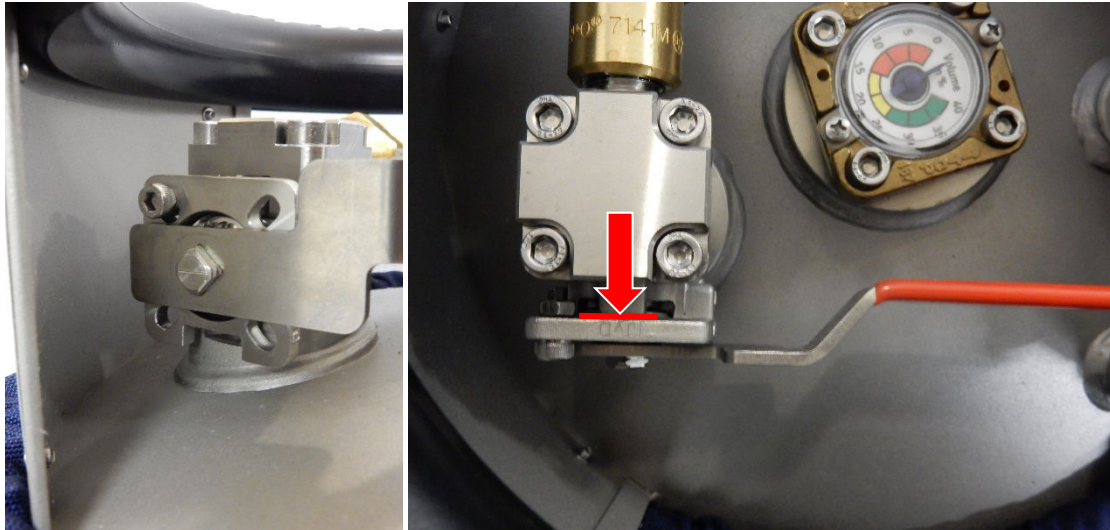
*Installation*

1. Before the installation the Ball Valve should look as seen in the Figure 1.



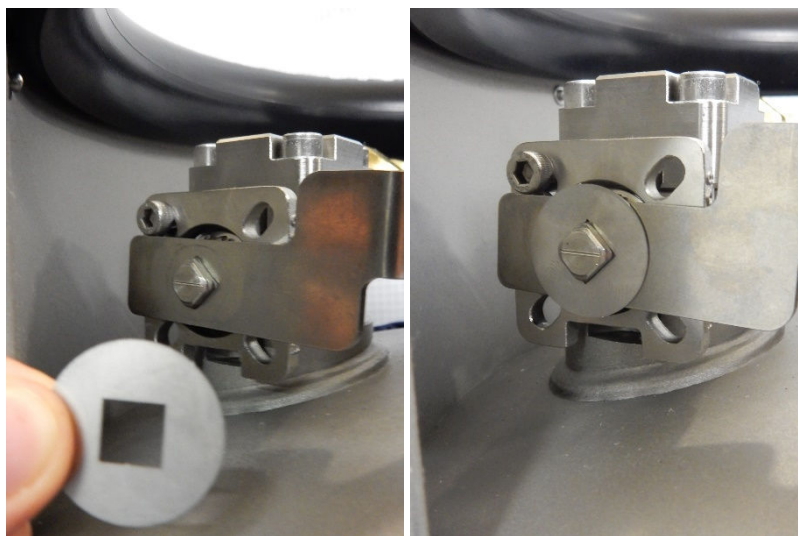
*Figure 1: Ball Valve before installation*

- Using the open-end wrench loosen and then unscrew the Ball Valve Lever Securing Nut. Do not remove the lever. The result is seen in the Figure 2. Before the next step make sure there is a washer between the lever and the Ball Valve body (see the arrow in the Figure 2). If not, contact your dealer and ask for a spare washer.



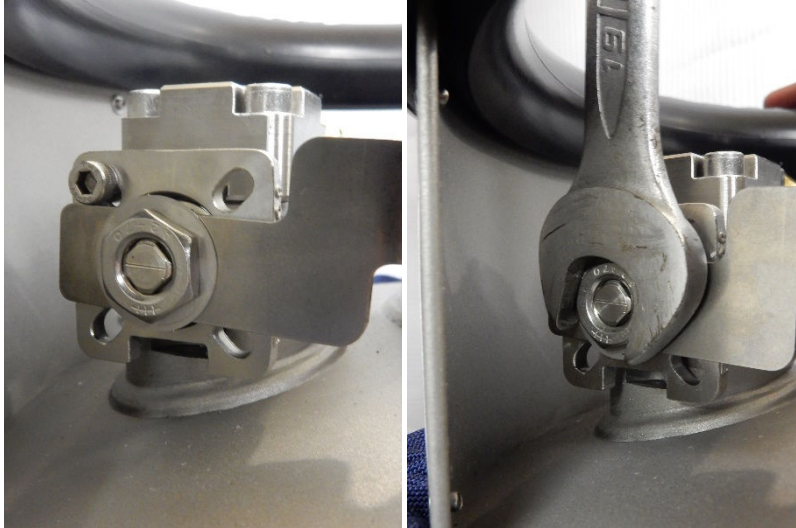
*Figure 2: Ball Valve with Securing Nut removed*

- Place the Ball Valve Lever Securing Washer, 0.3mm (**57713.00**) on Ball Valve thread as seen in the Figure 3.



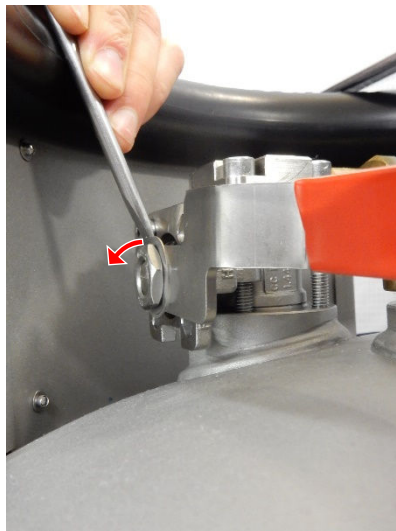
*Figure 3: Ball Valve Lever Securing Washer installation*

4. Screw the Ball Valve Lever Nut back on Ball Valve thread using hand and then tighten it with the size 19 open-end wrench sensitively as seen in the Figure 4. After tightening the nut move the lever from “close” to “open” position and back several times. The lever must not wobble; however, its movement must be easy and smooth. If these requirements are not fulfilled, adjust the nut tightening.



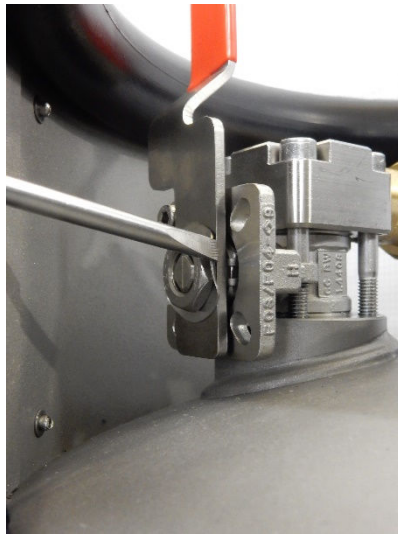
*Figure 4: Ball Valve Securing Nut installation*

5. After having adjusted the tightening switch the lever to “close” position and slightly bend the Ball Valve Lever Securing Washer, 0.3mm (**57713.00**) free edge towards the Ball Valve Securing Nut using the slotted screwdriver as seen in Figure 5.



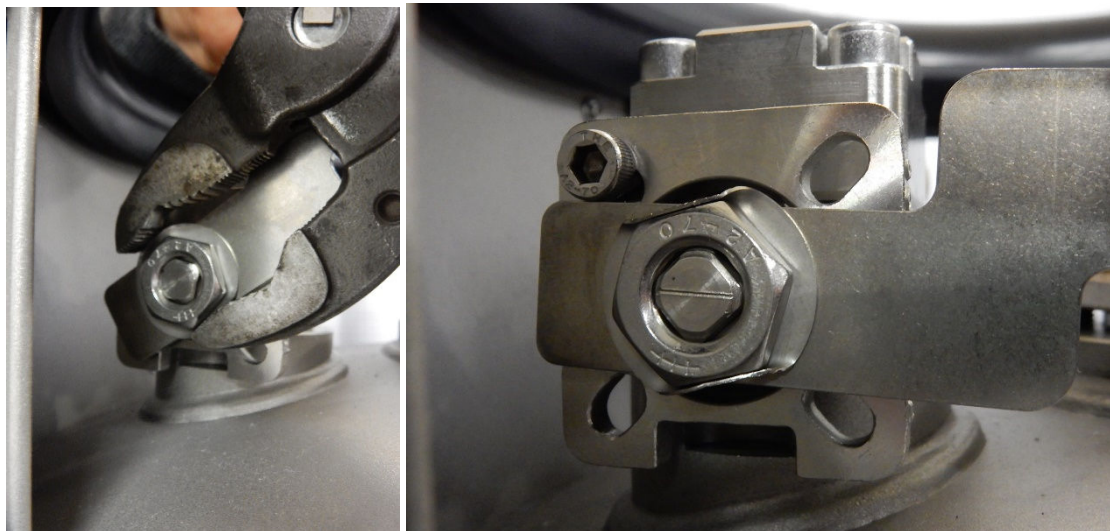
*Figure 5: Ball Valve Lever Securing Washer, 0.3mm free edge bending*

6. Switch the lever into “open” position and slightly bend the opposite Ball Valve Lever Securing Washer, 0.3mm (**57713.00**) free edge towards the Ball Valve Lever Nut as seen in the Figure 6.



*Figure 6: Ball Valve Lever Securing Washer, 0.3mm opposite free edge bending*

7. Using the tongue-and-groove pliers press both Ball Valve Lever Securing Washer, 0.3mm (**57713.00**) pre-bent edges towards each other as seen in the Figure 7 until both free edges are pressed tightly to the sides of the Ball Valve Lever Nut. The result is also seen in the Figure 7.



*Figure 7: Ball Valve Lever Securing Washer, 0.3mm pre-bent edges bending*

## Warning!

*The operation may be carried out only by individuals qualified in accordance with Part - M. National aviation authorities may require a higher maintenance standard (e.g. AMO, Part 145).*

Should you have any question, please contact the balloon manufacturer at [technical@kubicekballoons.cz](mailto:technical@kubicekballoons.cz)

Technical content of this document is approved under the authority of DOA No. EASA.21J.277.

On behalf of BALÓNY KUBÍČEK spol. s r.o.

A handwritten signature in blue ink, appearing to be 'Petr Kubíček'.

Ing. Petr Kubíček, technical director

Datum: 6 November 2018